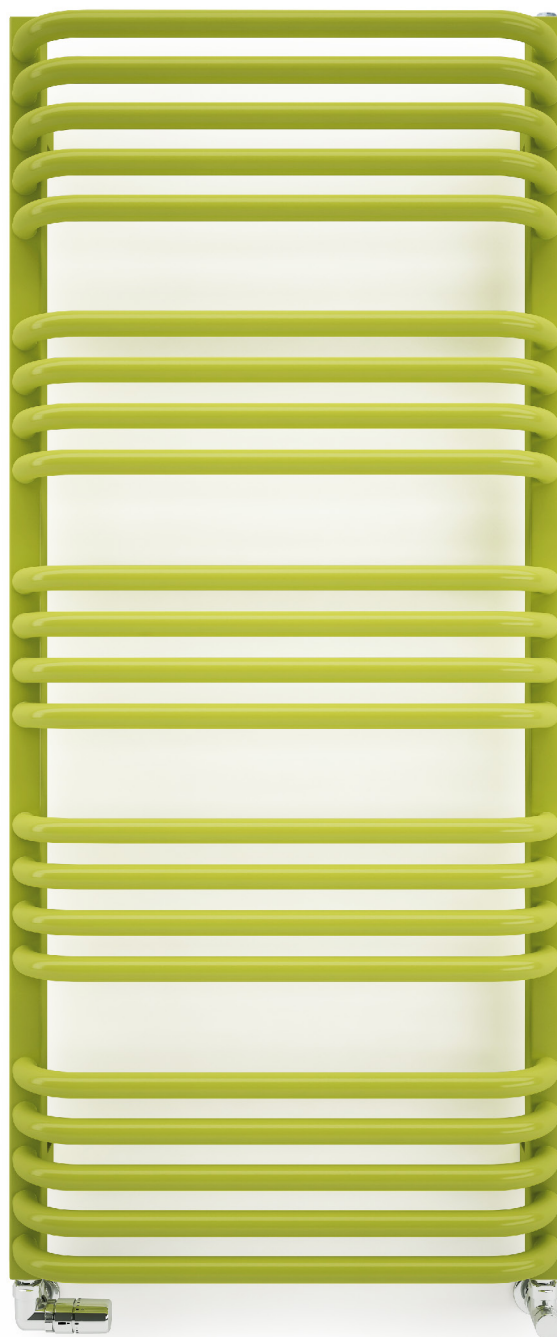


# Alex



  
**TERMA**  
SINCE 1990



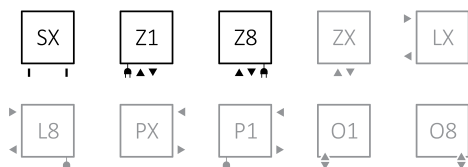
Alex 1140 x 500  
colour: *soft green apple*

3-axis thermostatic valve, left, chrome  
Angled lockshield valve, chrome  
Pipe-masking set, chrome



## Connections:

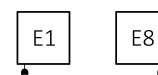
A ↓ 540÷1580:



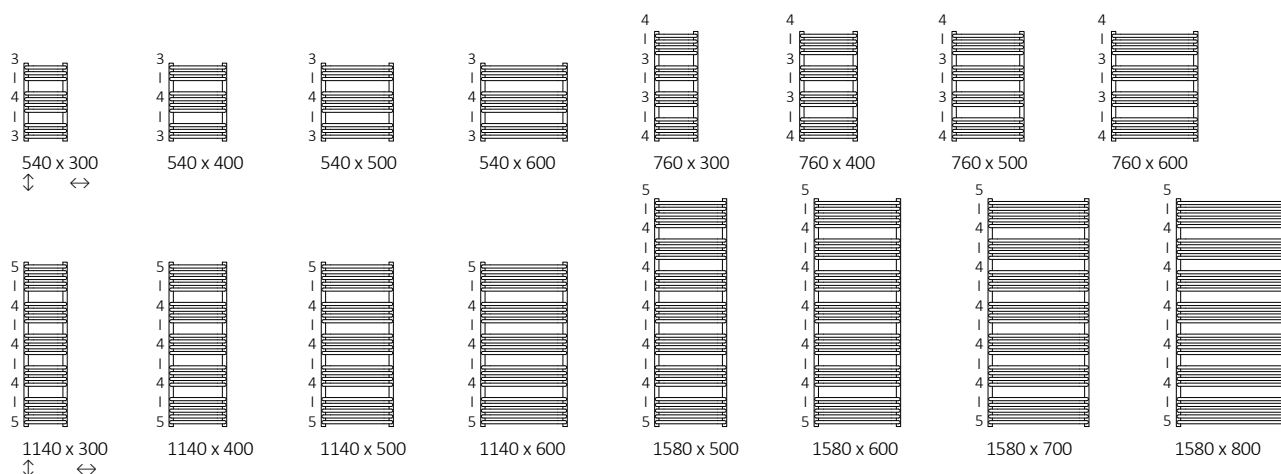
A ↓ 760÷1580:



Electric radiators:



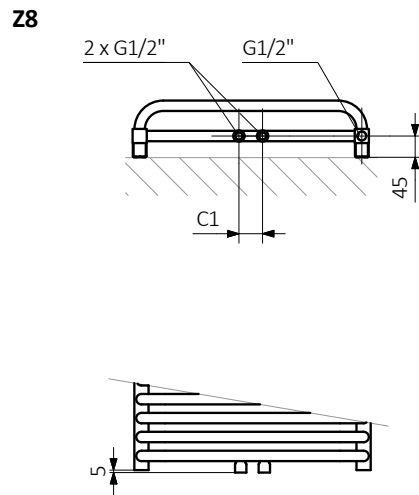
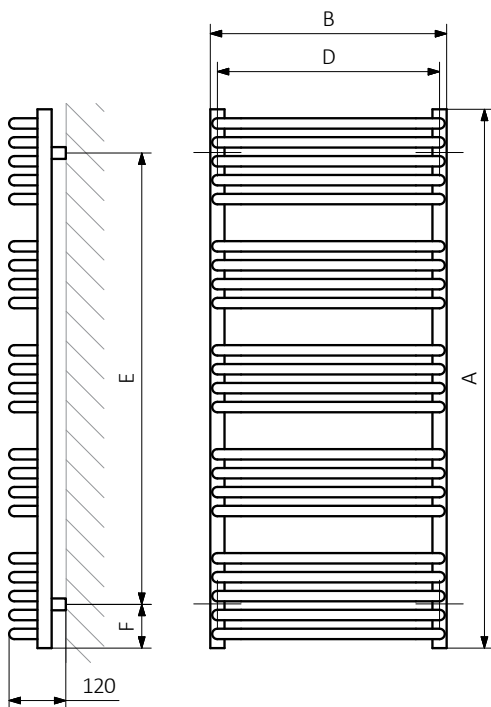
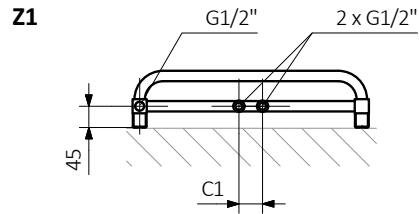
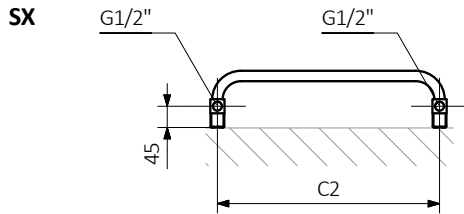
## Available sizes:



## Specifications:

Working pressure: 1,0 MPa    Maximum operating temperature: 95°C

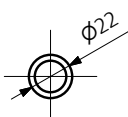
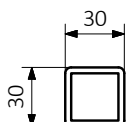
A ↓	B ↔	C1 [mm]	C2 [mm]	75/65/20°C [W]	55/45/20°C [W]	[W]	D [mm]	E [mm]	F [mm]	[dm³]	[kg]	Product Code <small>Configuration codes: 4</small>
540	300	50	270	180	99	200	270	355	94	1,75	3,57	WGALE054030
540	400	50	370	238	129	200	370	355	94	2,04	4,21	WGALE054040
540	500	50	470	299	161	300	470	355	94	2,32	4,85	WGALE054050
540	600	50	570	355	190	400	570	355	94	2,60	5,49	WGALE054060
760	300	50	270	257	137	300	270	575	94	2,46	4,95	WGALE076030
760	400	50	370	330	177	300	370	575	94	2,85	5,85	WGALE076040
760	500	50	470	412	220	400	470	575	94	3,25	6,74	WGALE076050
760	600	50	570	481	257	600	570	575	94	3,65	7,64	WGALE076060
1140	300	50	270	362	194	400	270	955	94	3,78	7,56	WGALE114030
1140	400	50	370	479	257	400	370	955	94	4,41	8,97	WGALE114040
1140	500	50	470	591	313	600	470	955	94	5,03	10,38	WGALE114050
1140	600	50	570	711	380	800	570	955	94	5,65	11,79	WGALE114060
1580	500	50	470	793	425	800	470	1395	94	6,90	14,17	WGALE158050
1580	600	50	570	949	508	1000	570	1395	94	7,75	16,09	WGALE158060
1580	700	50	670	1104	591	1000	670	1395	94	8,60	18,01	WGALE158070
1580	800	50	770	1253	670	1200	770	1395	94	9,45	19,93	WGALE158080



A — Height B — Width C1-C5 — Distance between pipe centres D — Horizontal distance between mounting bracket centres  
 E — Vertical distance between mounting brackets F — Distance between a mounting bracket and the bottom of the radiator

**Collector:**

**Profile:**





Product codes can be found in product data sheet tables. The codes provide some basic information about the product while a partially filled configuration code contains complementary information about the detailed specifications. When placing an order, product codes should include the fully completed configuration part. The configuration code part should be placed after the main product code. The main product code and configuration part will appear as shown in the example below:

The construction of a water and dual fuel radiator product and configuration code:

WGALE054030

K916SX

PRODUCT CODE  
(located in the table for the product)

CONFIGURATION CODE  
(supplemented by hand)

Configuration

**K** **916** **SX**

Package code    Colour code    Connection code  
*K – carton box*

Construction of electric heater configuration code

WLALE054030

K916E1DRYM

PRODUCT CODE  
(located in the table for the product)

CONFIGURATION CODE  
(supplemented by hand)

Configuration

**K** **916** **E1** **DRY** **M**

Package code    Colour code    Connection code    Heating element code    Type of heating element cable code  
*K – carton box*

Zinc powder primer

**C** – Code of zinc powder primer is an extra processes

WLALE054030 K916SX **C** — *Extra processes or additions code*



## Legend



Available in chrome finish.



Radiator available in a “water” version.



Radiator suitable for dual fuel connection. Electric heating element can be installed.



Radiator available in electric only version. It comes prefilled with a ‘heating medium’ and equipped with a heating element. All tested and ready to use.



Connection types dedicated for this radiator.  
The icon shows the flow and return connections for the radiator as well as the thermostat valve and heating element position if applicable.



Optional connections available for this radiator.



Suggested heating element power output for electric and dual fuel versions.



Weight.



Capacity.