

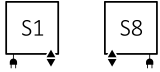
# Dexter One

The radiator has a built-in ONE heating element.

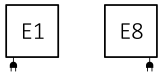


design: Darek Berus, Daniel Dawidowski

## Connections:



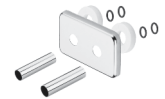
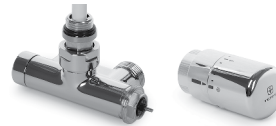
Electric radiators:



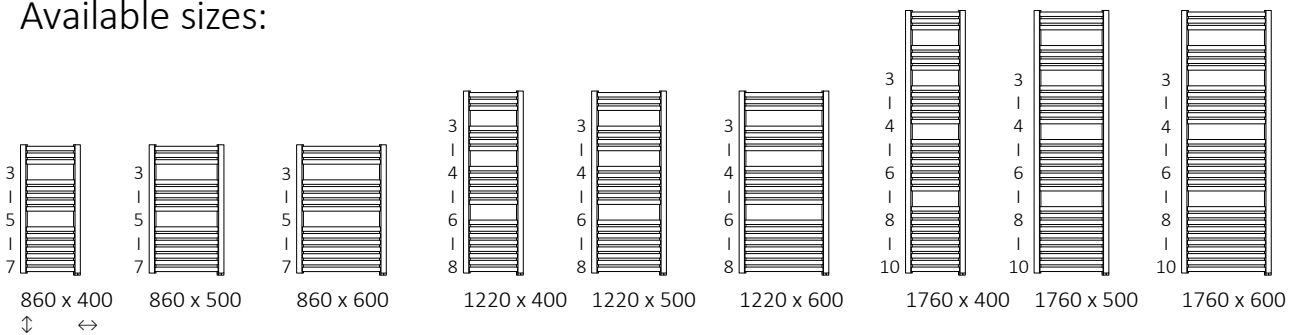
## We recommend:

A set of integrated thermostatic valves with immersion tube for S1 and S8 connections

Integrated pipe-masking set



## Available sizes:



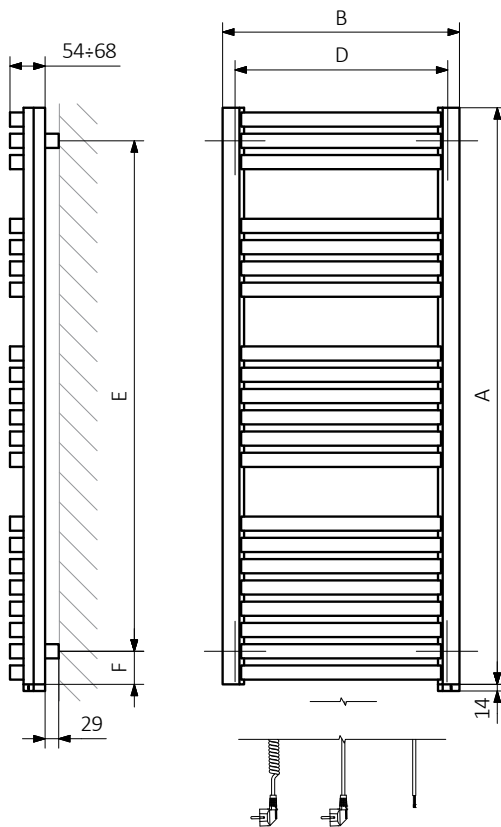
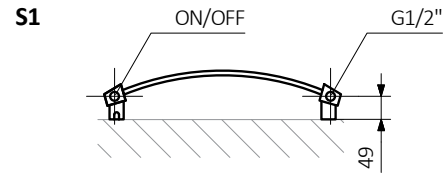
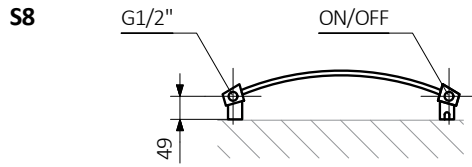
## Specifications:

Working pressure: 0,8 MPa    Maximum operating temperature: 82°C

A ↓	B ↔	75/65/20°C [W]	55/45/20°C [W]	[W]	D [mm]	E [mm]	F [mm]	[dm³]	[kg]	Product Code <small>Configuration codes: 3</small>
<b>Powder coating</b>										
860	400	338	178	400	350	720	70	2,61	7,07	WZDEN086040
860	500	422	222	400	450	720	70	2,90	8,35	WZDEN086050
860	600	510	269	600	550	720	70	3,18	9,64	WZDEN086060
1220	400	453	241	400	350	1080	70	3,73	9,89	WZDEN122040
1220	500	567	301	600	450	1080	70	4,12	11,69	WZDEN122050
1220	600	676	359	800	550	1080	70	4,52	13,49	WZDEN122060
1760	400	646	341	600	350	1620	70	5,46	14,40	WZDEN176040
1760	500	807	426	800	450	1620	70	6,05	17,05	WZDEN176050
1760	600	971	512	1000	550	1620	70	6,63	19,71	WZDEN176060
<b>Plated finishes</b>										
860	400	225	117	200	350	720	70	2,61	7,07	WZDEN086040
860	500	281	147	300	450	720	70	2,90	8,35	WZDEN086050
860	600	337	176	400	550	720	70	3,18	9,64	WZDEN086060
1220	400	298	155	300	350	1080	70	3,73	9,89	WZDEN122040
1220	500	373	194	400	450	1080	70	4,12	11,69	WZDEN122050
1220	600	448	233	400	550	1080	70	4,52	13,49	WZDEN122060
1760	400	421	218	400	350	1620	70	5,46	14,40	WZDEN176040
1760	500	526	273	600	450	1620	70	6,05	17,05	WZDEN176050
1760	600	631	327	600	550	1620	70	6,63	19,71	WZDEN176060

# Dexter One

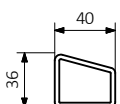
The radiator has a built-in ONE heating element.



A — Height B — Width C1-C5 — Distance between pipe centres D — Horizontal distance between mounting bracket centres  
E — Vertical distance between mounting brackets F — Distance between a mounting bracket and the bottom of the radiator

**Collector:**

**Profile:**





Product codes can be found in product data sheet tables. The codes provide some basic information about the product while a partially filled configuration code contains complementary information about the detailed specifications. When placing an order, product codes should include the fully completed configuration part. The configuration code part should be placed after the main product code. The main product code and configuration part will appear as shown in the example below:

## The Construction of the product and configuration code for a radiator with the built-in heating element ONE

WWBNN076050

K916E1W

PRODUCT CODE  
(located in the table for the product)

CONFIGURATION CODE  
(supplemented by hand)

### Configuration

K 916 E1 P

Package code   Colour code   Connection code   Type of heating element cable code  
*K – carton box*

### Zinc powder primer

C – Code of zinc powder primer is an extra processes

WLAL054030 K916SX **C** — *Extra processes or additions code*



## Legend



Available in chrome finish.



Radiator available in a "water" version.



Radiator suitable for dual fuel connection. Electric heating element can be installed.



Radiator available in electric only version. It comes prefilled with a 'heating medium' and equipped with a heating element. All tested and ready to use.



Connection types dedicated for this radiator.  
The icon shows the flow and return connections for the radiator as well as the thermostat valve and heating element position if applicable.



Optional connections available for this radiator.



Suggested heating element power output for electric and dual fuel versions.



Weight.



Capacity.