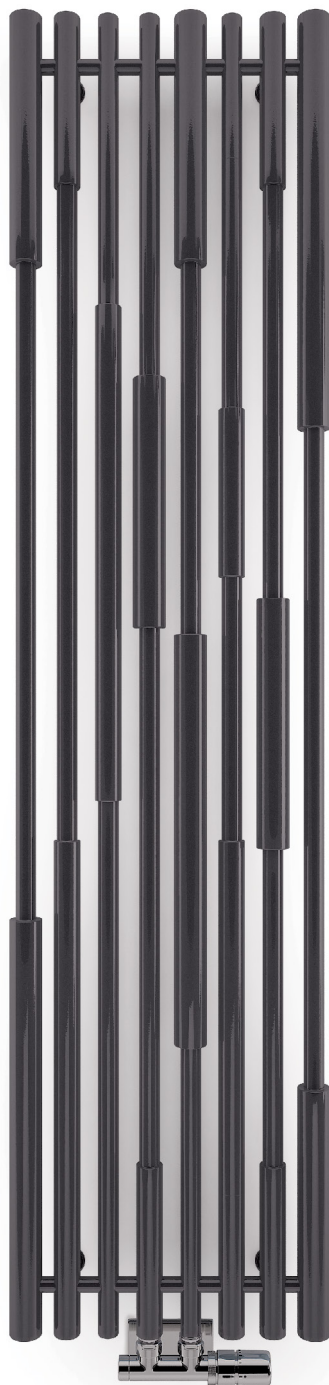


Cane



Colour included
in the price



Cane 1600 x 390
colour: *granite*

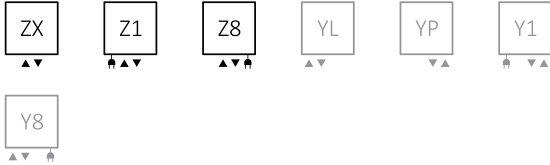
Integrated thermostatic valve, angled, left, chrome
SLIM thermostatic head, chrome
Integrated pipe-masking set, chrome



Colour included
in the price

design: Jacek Ryń

Connections:



We recommend:

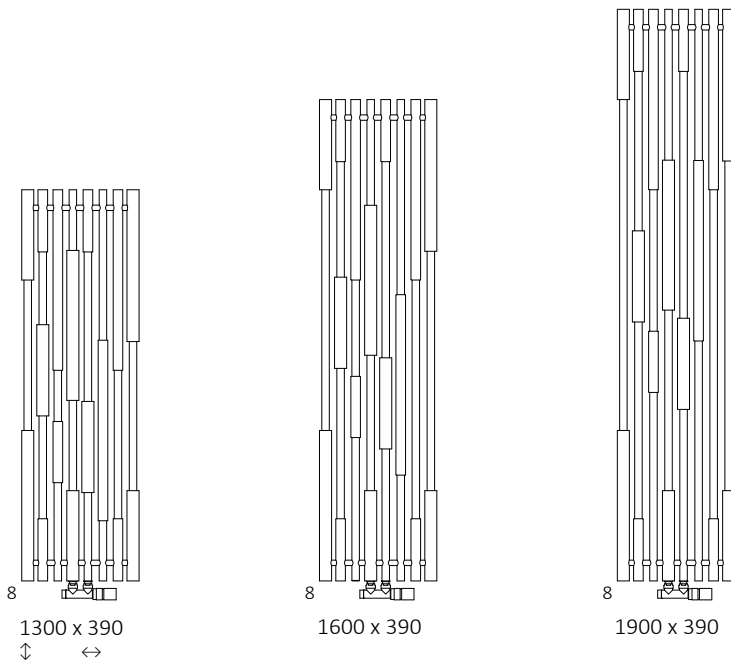
Zinc primer



REG 2 heating element


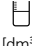
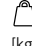


Available sizes:



Specifications:

Working pressure: 1,0 MPa Maximum operating temperature: 95°C

A ↓	B ↔	C1 [mm]	75/65/20°C [W]	55/45/20°C [W]	 [W]	D [mm]	E [mm]	F [mm]	 [dm³]	 [kg]	Product Code <small>Configuration codes.4</small>
1300	390	50	569	300	600	250	1180	60	6,77	13,10	WGCAN130039
1600	390	50	670	354	800	250	1480	60	7,69	14,80	WGCAN160039
1900	390	50	768	405	800	250	1780	60	8,56	17,20	WGCAN190039

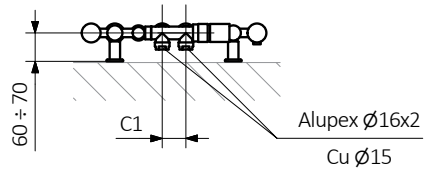
Included components: The radiator is sold with an integrated, angled thermostatic valve, SLIM thermostatic head and adapters for installation (Alupex Ø 16x2 and copper Ø 15). All valve components are finished in chrome.

Cane

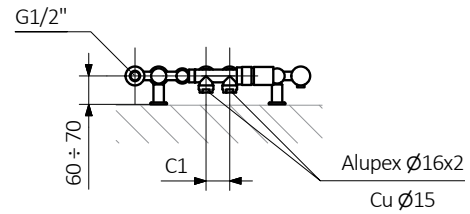


Colour included
in the price

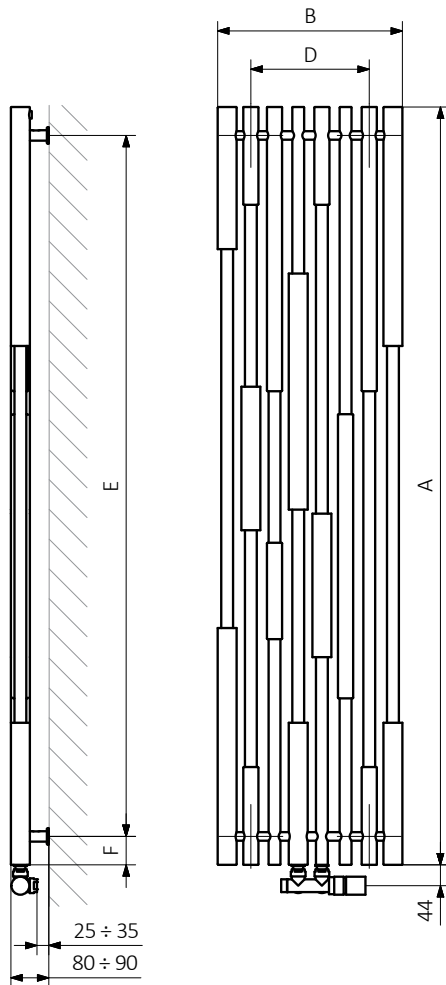
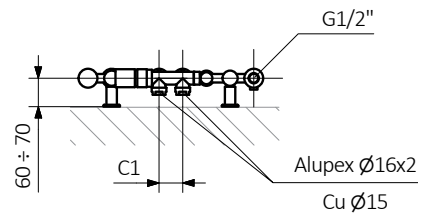
ZX



Z1



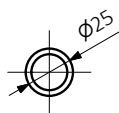
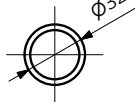
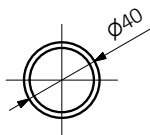
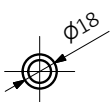
Z8




A — Height B — Width C1-C5 — Distance between pipe centres D — Horizontal distance between mounting bracket centres
E — Vertical distance between mounting brackets F — Distance between a mounting bracket and the bottom of the radiator

Collector:

Profile:





 Colour included
in the price

Product codes can be found in product data sheet tables. The codes provide some basic information about the product while a partially filled configuration code contains complementary information about the detailed specifications. When placing an order, product codes should include the fully completed configuration part. The configuration code part should be placed after the main product code. The main product code and configuration part will appear as shown in the example below:

The construction of a water and dual fuel radiator product and configuration code:

WGALE054030

K916SX

PRODUCT CODE
(located in the table for the product)

CONFIGURATION CODE
(supplemented by hand)

Configuration

K 916 SX


Package code Colour code Connection code
K – carton box

Zinc powder primer

C – Code of zinc powder primer is an extra processes

WLALE054030 K916SX **C** — *Extra processes or additions code*



 Colour included
in the price

Legend



Available in chrome finish.



Radiator available in a “water” version.



Radiator suitable for dual fuel connection. Electric heating element can be installed.



Radiator available in electric only version. It comes prefilled with a ‘heating medium’ and equipped with a heating element. All tested and ready to use.



Connection types dedicated for this radiator.
The icon shows the flow and return connections for the radiator as well as the thermo-
static valve and heating element position if applicable.



Optional connections available for this radiator.



Suggested heating element power output for electric and dual fuel versions.



Weight.



Capacity.