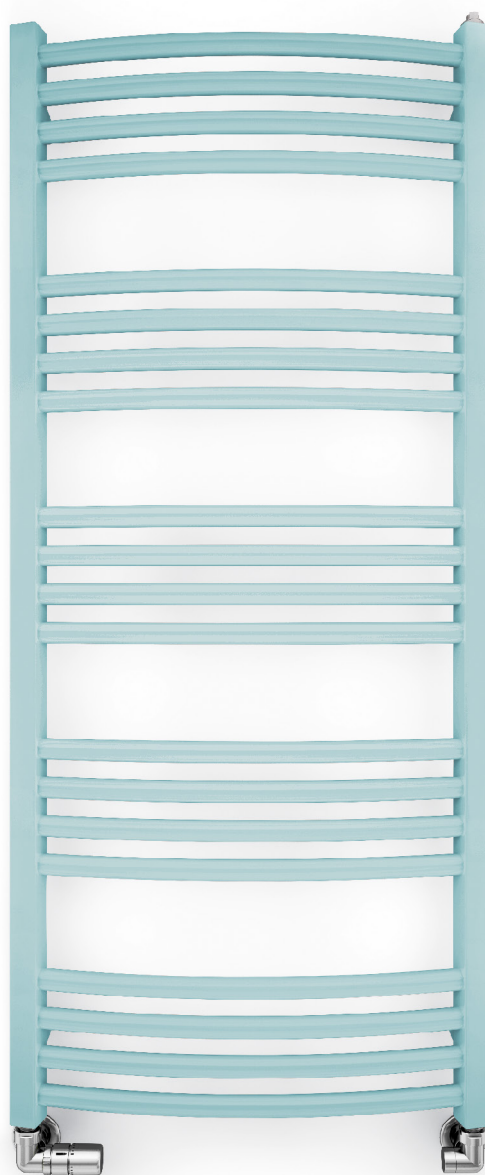


Lena




TERMA
SINCE 1990



Lena 1140 x 486
colour: pastel blue

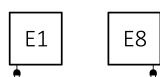
3-axis thermostatic valve, left, chrome
3-axis lockshield valve, right, chrome
Pipe-masking set, chrome
SLIM thermostatic head, chrome



Connections:



Electric radiators:



We recommend:

3-axis regulating valve set for SX connection



Pipe-masking set, chrome



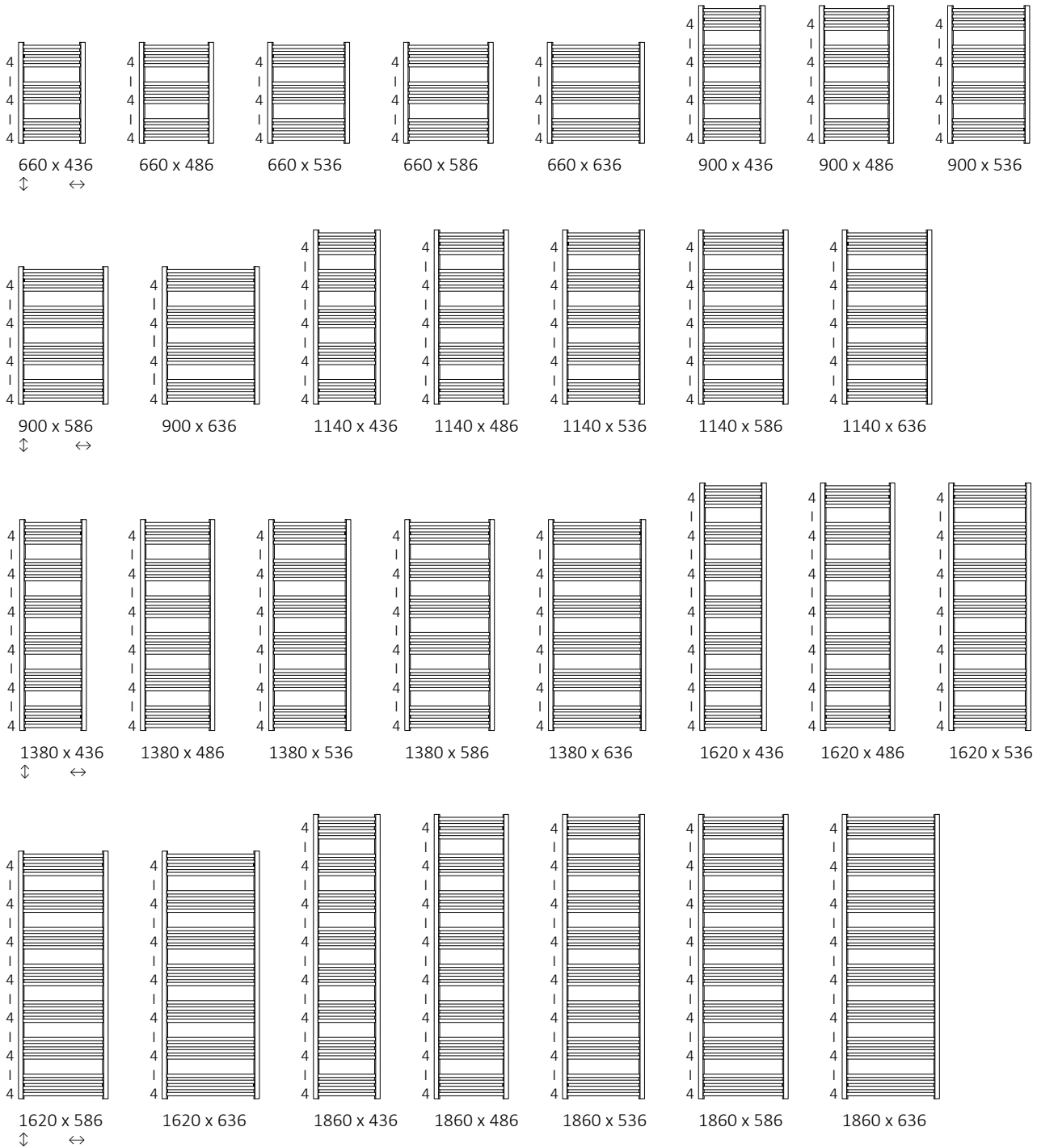
Specifications:

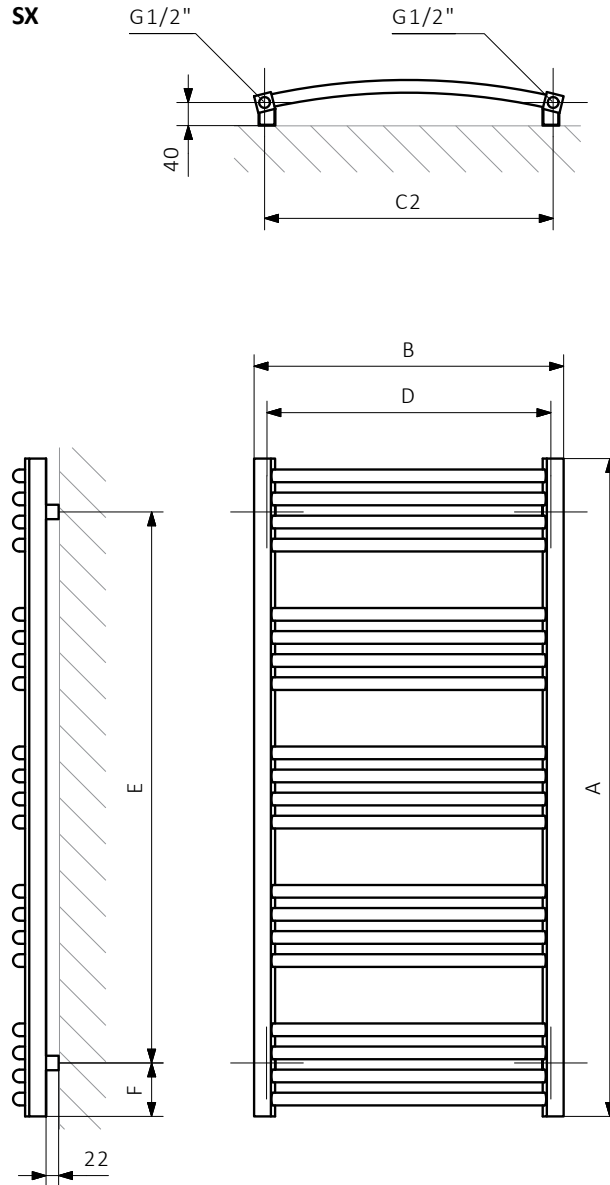
Working pressure: 1,0 MPa Maximum operating temperature: 95°C

A ↓	B ↔	C2 [mm]	75/65/20°C [W]	55/45/20°C [W]	[W]	D [mm]	E [mm]	F [mm]	H [dm³]	[kg]	Product Code <small>Configuration codes: 5</small>
660	436	400	262	141	300	392	475	94	2,36	4,70	WGLEN066043
660	486	450	287	155	300	442	475	94	2,54	5,08	WGLEN066048
660	536	500	312	168	300	492	475	94	2,72	5,47	WGLEN066053
660	586	550	337	181	400	542	475	94	2,90	5,85	WGLEN066058
660	636	600	361	194	400	592	475	94	3,08	6,23	WGLEN066063
900	436	400	351	189	400	392	715	94	3,18	6,29	WGLEN090043
900	486	450	385	207	400	442	715	94	3,42	6,80	WGLEN090048
900	536	500	418	225	400	492	715	94	3,65	7,32	WGLEN090053
900	586	550	451	242	400	542	715	94	3,89	7,83	WGLEN090058
900	636	600	484	260	600	592	715	94	4,13	8,34	WGLEN090063
1140	436	400	440	236	400	392	955	94	3,99	7,89	WGLEN114043
1140	486	450	483	259	600	442	955	94	4,29	8,53	WGLEN114048
1140	536	500	525	281	600	492	955	94	4,59	9,17	WGLEN114053
1140	586	550	566	303	600	542	955	94	4,89	9,81	WGLEN114058
1140	636	600	607	325	600	592	955	94	5,19	10,45	WGLEN114063
1380	436	400	530	284	600	392	1195	94	4,81	9,48	WGLEN138043
1380	486	450	582	311	600	442	1195	94	5,17	10,25	WGLEN138048
1380	536	500	632	338	600	492	1195	94	5,53	11,02	WGLEN138053
1380	586	550	682	365	800	542	1195	94	5,88	11,79	WGLEN138058
1380	636	600	731	391	800	592	1195	94	6,24	12,56	WGLEN138063
1620	436	400	621	332	600	392	1435	94	5,63	11,08	WGLEN162043
1620	486	450	681	364	800	442	1435	94	6,04	11,97	WGLEN162048
1620	536	500	741	396	800	492	1435	94	6,46	12,87	WGLEN162053
1620	586	550	799	427	800	542	1435	94	6,88	13,77	WGLEN162058
1620	636	600	857	457	800	592	1435	94	7,30	14,66	WGLEN162063
1860	436	400	714	380	800	392	1675	94	6,44	12,67	WGLEN186043
1860	486	450	783	417	800	442	1675	94	6,92	13,70	WGLEN186048
1860	536	500	851	453	800	492	1675	94	7,40	14,72	WGLEN186053
1860	586	550	918	489	1000	542	1675	94	7,87	15,75	WGLEN186058
1860	636	600	984	524	1000	592	1675	94	8,35	16,77	WGLEN186063



Available sizes:

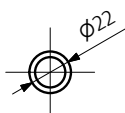
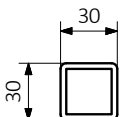




A — Height B — Width C1-C5 — Distance between pipe centres D — Horizontal distance between mounting bracket centres
 E — Vertical distance between mounting brackets F — Distance between a mounting bracket and the bottom of the radiator

Collector:

Profile:





Product codes can be found in product data sheet tables. The codes provide some basic information about the product while a partially filled configuration code contains complementary information about the detailed specifications. When placing an order, product codes should include the fully completed configuration part. The configuration code part should be placed after the main product code. The main product code and configuration part will appear as shown in the example below:

The construction of a water and dual fuel radiator product and configuration code:

WGALE054030

PRODUCT CODE
(located in the table for the product)

K916SX

CONFIGURATION CODE
(supplemented by hand)

Configuration

K **916** **SX**

Package code Colour code Connection code
K – carton box

Construction of electric heater configuration code

WLALE054030

PRODUCT CODE
(located in the table for the product)

K916E1DRYM

CONFIGURATION CODE
(supplemented by hand)

Configuration

K **916** **E1** **DRY** **M**

Package code Colour code Connection code Heating element code Type of heating element cable code
K – carton box

Zinc powder primer

C – Code of zinc powder primer is an extra processes

WLALE054030 K916SX **C** — *Extra processes or additions code*



Legend



Available in chrome finish.



Radiator available in a “water” version.



Radiator suitable for dual fuel connection. Electric heating element can be installed.



Radiator available in electric only version. It comes prefilled with a ‘heating medium’ and equipped with a heating element. All tested and ready to use.



Connection types dedicated for this radiator.
The icon shows the flow and return connections for the radiator as well as the thermostatic valve and heating element position if applicable.



Optional connections available for this radiator.



Suggested heating element power output for electric and dual fuel versions.



Weight.



Capacity.